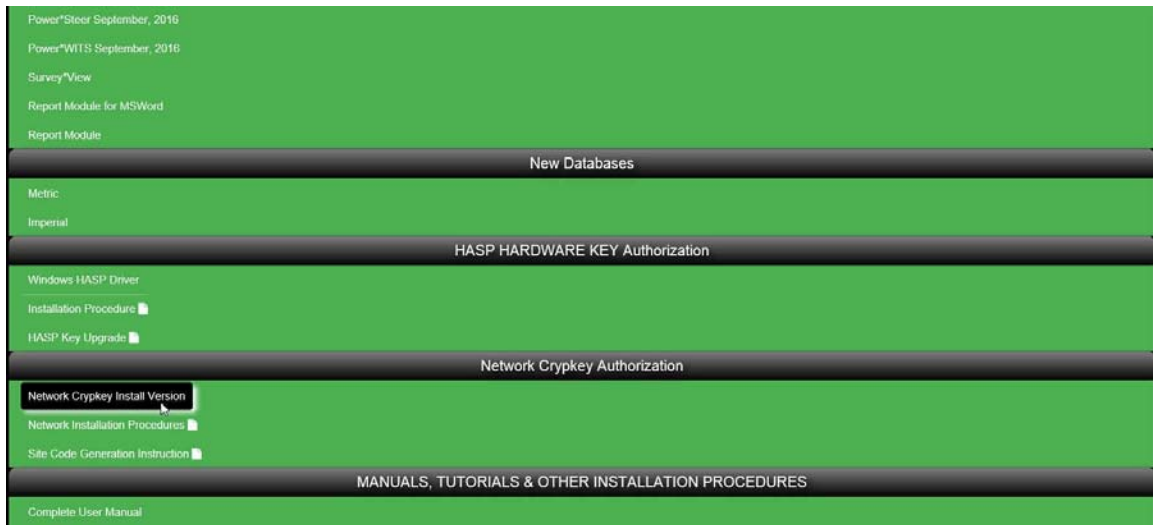
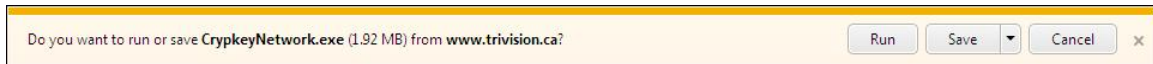


Crypkey Network Installation Procedures

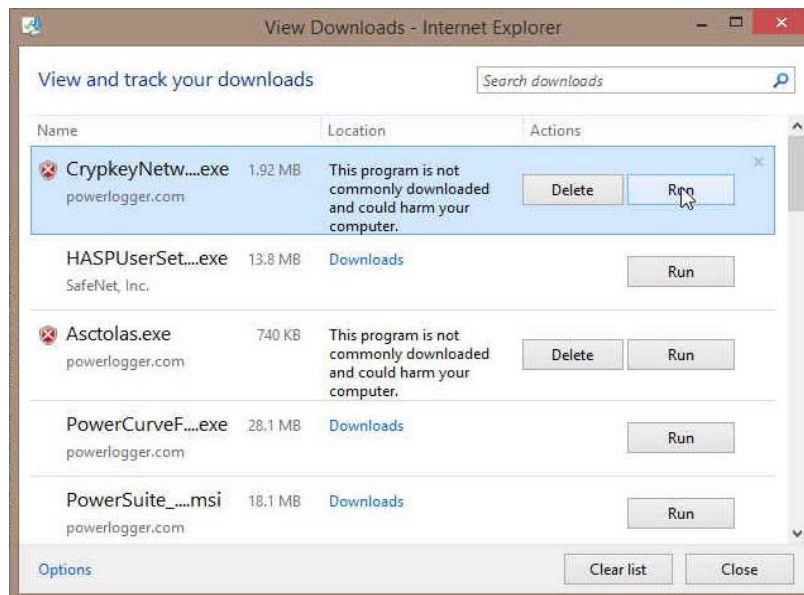
- 1.) **Go** to our website download page www.powerlogger.com/downloads.asp and download the file Network Crypkey Install Version.



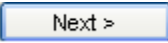
- 1.) **Click** on the **Network Crypkey Install Version** selection from our downloads page www.powerlogger.com/downloads.html. This will activate the download the file CrypkeyNetwork.exe.




- 2.) **Click** on the **Save** button and the file will be directed to your downloads folder.
- 3.) **Click** on the **View downloads** button. This will activate the View Downloads Window.

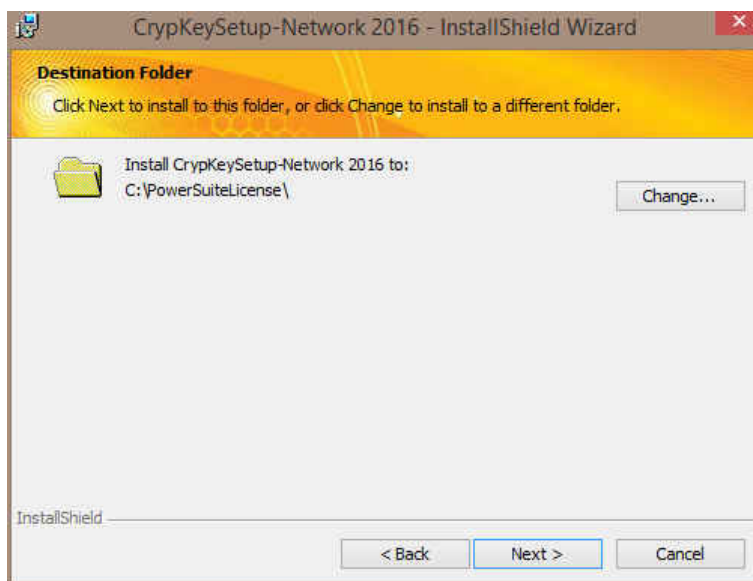


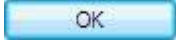
- 4.) **Highlight** the **Crypkey Network.exe** file and **Click** on the **Run** button. This will start up the Install Wizard.

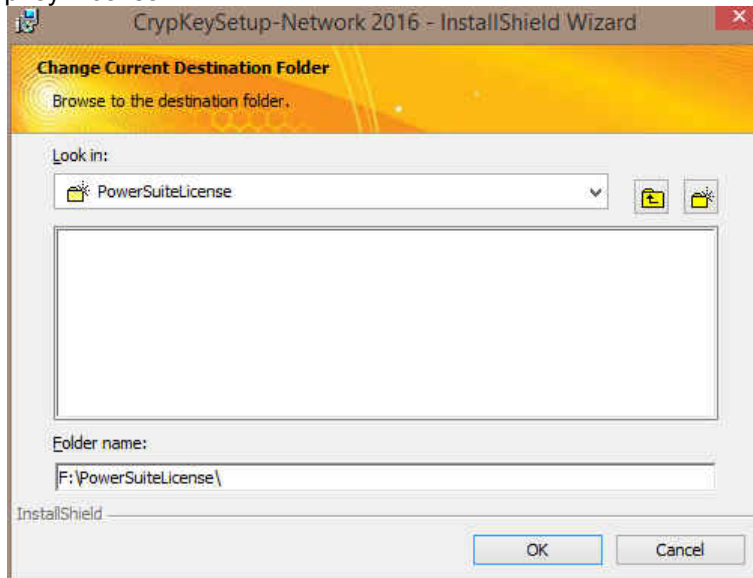
- 5.) This will activate the Install Shield setup followed by the Windows Install window and the **Power*Suite Crypkey Installer Welcome Message Window**. **Click** on the  **button**.

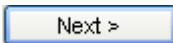


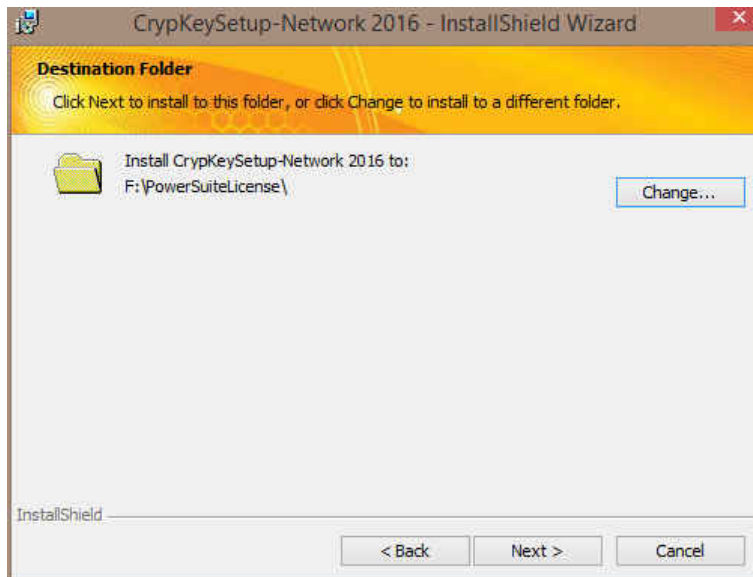
- 6.) This will activate the **Destination Folder** window with **C:\PowersuiteLicense** as the default location. **Click** on the  **button**. This will activate the Change Current Destination folder window.



- 7.) **Locate the Network Drive and Create a folder** to accomadate the **PowerSuiteLicense** folder. **Click** on the  **button**. This will result in the a new folder drive for the Network Crypkey License



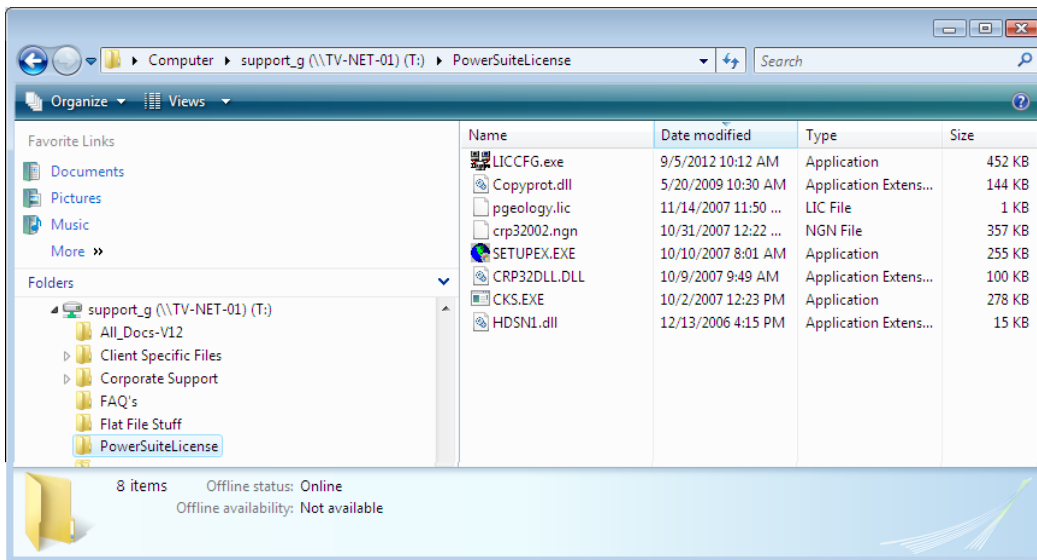
- 8.) This will result in a new **Destination Folder** window with **Network Drive:\PowersuiteLicense** as the default location. **Click** on the  **button**. This will initiate the Install of the Crypkey License Service.




9.) Once the Installation is complete the **Install Wizard Completed** window shown below will be activated. **Click on the  button.**

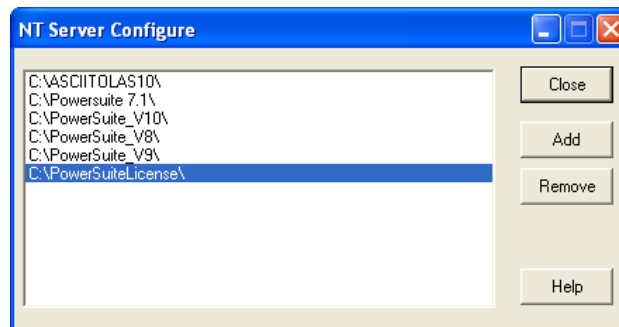
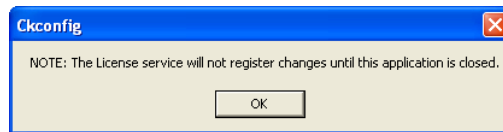


10.) If this was installed successfully you will have a folder on the Network Drive with the name that was given in Step 7 with the files as shown below.

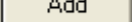


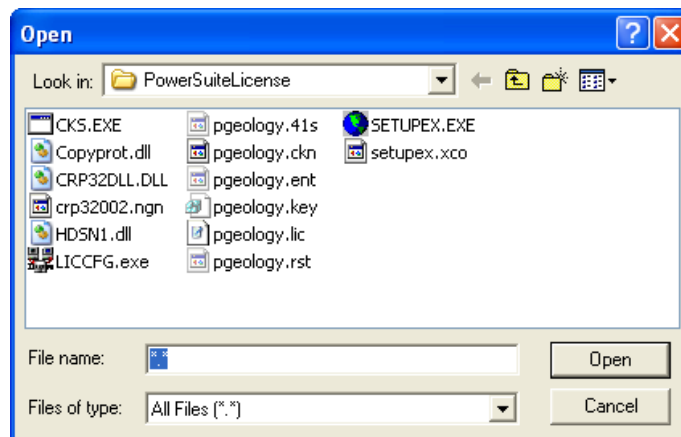
Crypkey Service Confirmation Procedure

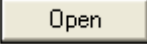
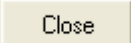
1. To view if the correct folder has been given the crypkey service rights you can view this by going into the **windows explorer** and go to the **Windows** folder (WinNT) or operating system folder and **double click** on a file named **ckconfig.exe**.
2. This will activate the window as shown below. You may get a Ckconfig window with a Note as shown below. **Click** on the  button and the NT Server Configure window will be activated.



Remember to give all users full read and write privileges to this folder as well as a view as the license files have to be written and removed as the user accesses the PowerSuite license.

3. If you do not see the PowersuiteLicense folder **click** on the  button. This will activate the Open window.

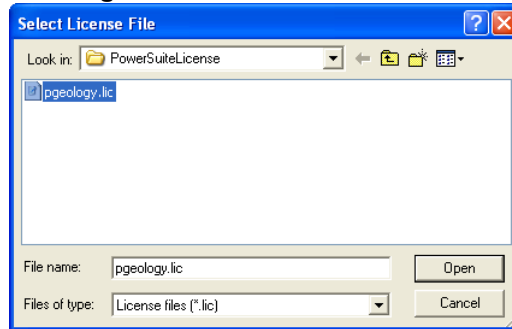


4. **Browse** to find the install directory and **double click on any file** in the install folder (in our case the PowersuiteLicense). Or **click on any file name** and **click** on the  button
5. Then **click** on the  button.
6. This folder created must have full read write privileges for all users and all the user must also see the folder through the browse command.

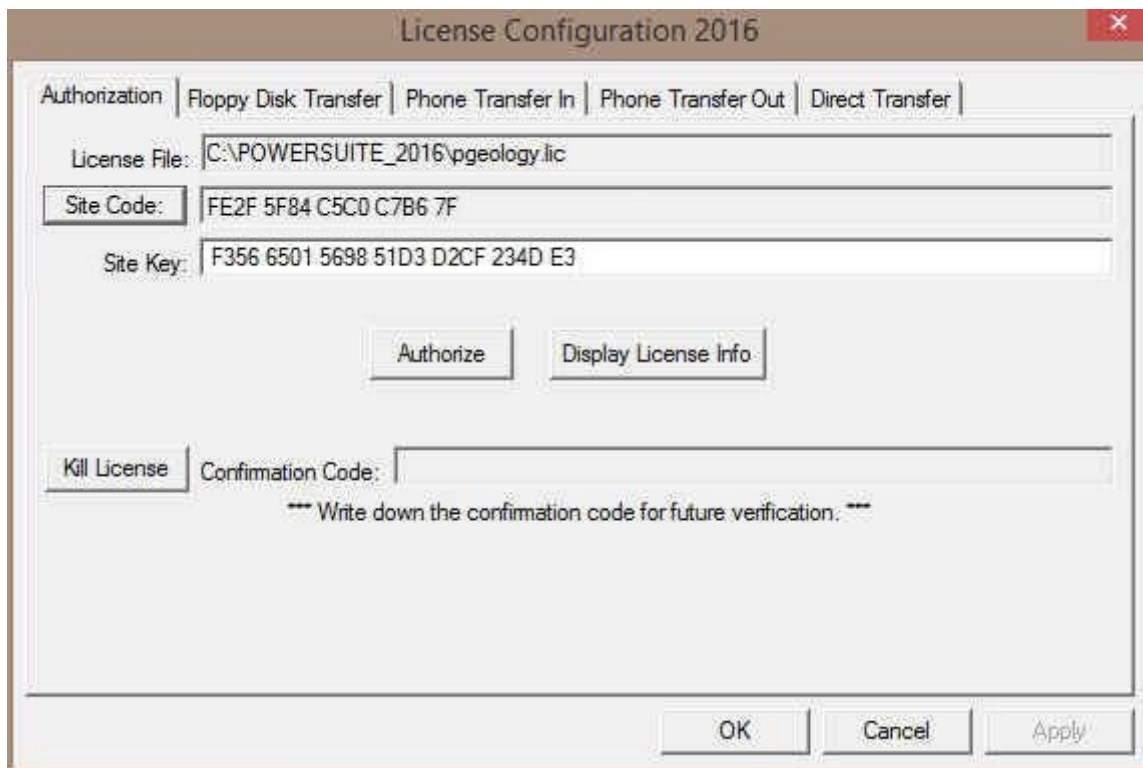
Network Crypkey Power*Suite License Authorization

The user will now have to get a Network license activation from Trivision Geosystems Ltd.

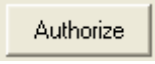
- 1) If this is a virtual server or a regular server it is mandatory to access the server through the browse command to the shared folder that was created ie \\servername\powersuitelicense. Then you can **launch** the **liccfg.exe** from there.



- 2.) **Click** on the **pgeology.lic** file name in the Crypkey Network installation folder and then **click** on the **Open** button in the **Select License File** window to proceed.
- 3.) Acknowledge both the subsequent error message and the contact message by **clicking** on the **OK** buttons. This will now activate the **License Configuration 2016** window which will default to the Authorization Tab.



- 4.) **Click** on the **Site Code** button within the window.
- 5.) This will activate a System message stating "Site Code generation may take a few minutes. Do you wish to continue?" **Click** on the **Yes** button.


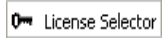
- 6.) The *Site Code* will be generated and can then be displayed in the *Site Code* field. This number can be written down, copied and pasted and sent to Trivision via phone at (403) 777-9454, or email at info@powerlogger.com.
- 7.) **DO NOT CLOSE THIS WINDOW !!!!**
- 8.) Trivision will generate a *Site Key*. This number will have coded within it the number of days the program will be activated for and which modules you wish to purchase or evaluate. Type the site key number within the *Site Key* Field.
- 9.) **Click** on the  **button**. If successful you will get a message indicating so.

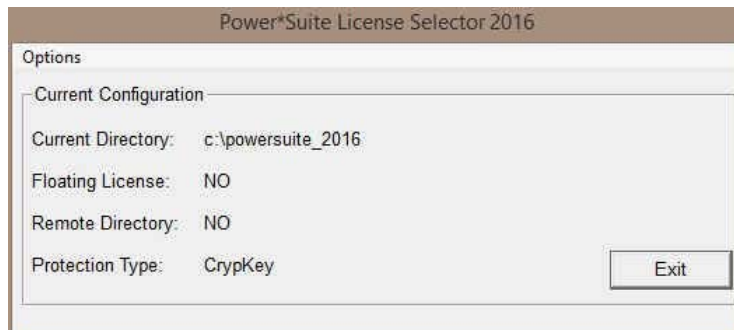
Crypkey (Software) License Activation [Remote]

The Crypkey Authorization (Remote) licensing has to be done by Trivision Geosystems Ltd. on a Network Server. To activate a trial or permanent Remote Crypkey license please call our office @ (403) 777-9454. The user should refer to the License Configuration section in the manual to generate a site code. Each machine should be loaded the setup, latest patch / update as well as the crystal reports. Once this is done each machine on the network can be configured to look at eh Network License file as setup previously.

Crypkey (Software) License Activation [Remote]

The Crypkey Authorization (Remote) licensing has to be done by TriVision Geosystems Ltd. on a Network Server. To activate a trial or permanent Remote Crypkey license please call our office @ (403) 777-9454. The user should refer to the License Configuration section in the manual to generate a site code.

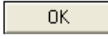
1. In **Windows 7** or less **click** on the  **button** on the taskbar and **click** on **All Programs** and **select POWER*SUIE_2016**. Then, select **Utilities** and **click** on the  **selection**. This will activate the License Selector window. In **Windows 8** you can **press** the **Windows key** on the **keypad** and **type License Selector** into the search bar and then **select** the **License Selector** to activate the window.



1. **Click** on the **Options** selection to view the pull down menu.



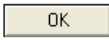
2. **Select Crypkey** to activate a pop-out menu.
3. **Select Remote** to activate another pop-out menu.
4. **Select** either the **UNC Network Path** or the **Mapped Network Drive** selection to direct the Power*Suite applications to the location of the licensing files. The Protection type should read Crypkey as viewed in the Power*Suite License Selector window as well as the path to the remote directory where the license files are located as shown above. Refer to step 6 or 7 depending on your application.

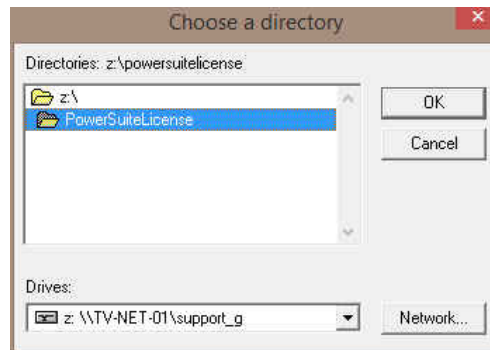
5. **UNC Network Path** will activate a window in which the user should type in the path to the Crypkey License files as shown below and then **click** on the  **button**.



The result of step 5 should look like the picture shown below



6. **Mapped Network Drive** will open a window in which the user will select the drive and directory in which the Crypkey License files reside and then **click** on the  **button**.



The result of step 6 should look like the picture shown below.



7. **Click** on the  **button**

You are now ready to run Power*Log, Power*Curve, Power*Core or ASCII to LAS depending on your Crypkey remote license and its authorization permissions.